

# Keynote Lectures:

Lisa F. Barrett

Joan Y. Chiao

Philippe R. Goldin

James J. Gross

Kevin Ochsner

Tor D. Wager

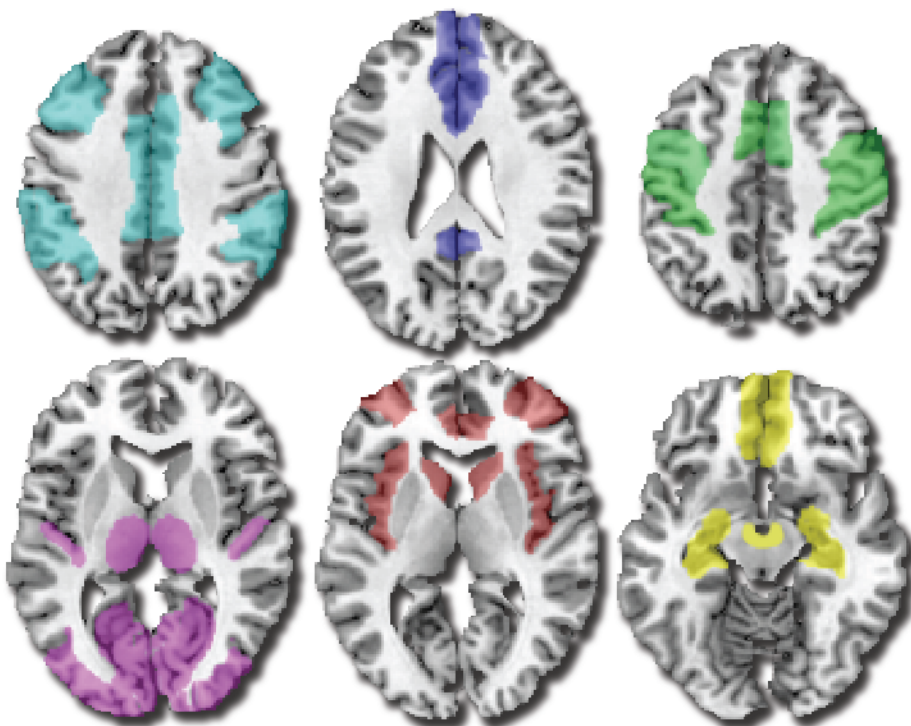


# Emotional, All Too Emotional

Neuroscience Views of Affect and Regulation in Humans

March 19th-21st 2013 - Tel Aviv University

Lectures :



Hillel Aviezer  
Moshe Bar  
Yair Bar-Haim  
Tal Eyal  
Ruth Feldman  
Itzhak Fried  
Eran Halperin  
Talma Hendler  
Gilad Hirschberger  
Eva Jablonka  
Dominique Lamy  
Nira Liberman  
Mario Mikulincer  
Hadas Okon-Singer  
Rony Paz  
Gal Raz  
Simone Shamay-Tsoory  
Gal Sheppes  
Gaurav Suri  
Maya Tamir

**I-CORE**  
Israeli Centers of Research Excellence

Supported by the I-CORE Program of the  
planning and Budgeting Committee and the  
Israel Science Foundation (grant No. 51/11)



The Center of Research Excellence in the Cognitive Sciences

Weizmann Institute of Science\*Tel Aviv University\*Bar Ilan University\* Tel Aviv Sourasky Medical Center\*Yezreel Valley College

### **Sponsors:**

I-CORE for Cognitive Neuroscience – I-CORE Program of the Planning and Budgeting Committee and the Israel Science Foundation (grant No. 51/11)

Functional Brain Center at Tel Aviv Sourasky Medical Center, Israel

School of Psychological Sciences & Sagol School of Neuroscience at Tel Aviv University, Israel

School of Psychology at the Interdisciplinary Center Herzliya, Israel

The Adams Super Center for Brain Studies at Tel-Aviv University

The Levie-Edersheim-Gitter Institute for Functional Brain Mapping, Tel Aviv University Collaborating with Tel Aviv Sourasky Medical Center

NBT New Biotechnology Ltd.

ElMindA Ltd.

### **Organization:**

Academic: Talma Hendler, Gadi Gilam and Gal Raz – Tel Aviv University & Tel Aviv Sourasky Medical Center, Israel

Gal Sheppes – Tel Aviv University, Israel

James J. Gross – Stanford University, USA

Administrative: Orly Elchadif – Functional Brain Center at Tel Aviv Sourasky Medical Center, Israel

Galit Zemel – I-CORE for Cognitive Neuroscience, Israeli Center Of Research Excellence Program of the Planning and Budgeting Committee and the Israel Science Foundation

Cover Design: Eyal Soreq, Yael Jacob and Gadi Gilam – Tel Aviv University & Functional Brain Center at Tel Aviv Sourasky Medical Center, Israel

**Wishing you all a wonderful conference**

Program is available also at: <http://fmri-tlv.org/conferences/i-core2013.pdf>

## **Day 1 – Tuesday, 19<sup>th</sup> of March, 2013 B'nai Zion Auditorium, Diaspora Museum**

09:00-09:30 **Registration & Coffee**

09:30-10:00 Welcome greetings:

**Talma Hendler**, *Tel Aviv University & Tel Aviv Sourasky Medical Center, Israel* –  
Representing the Organizing Committee

**Itzhak Fried**, *Tel Aviv University and Tel Aviv Sourasky Medical Center, Israel; and  
University of California, USA* – Representing the Steering Committee of the I-CORE  
for Cognitive Neuroscience

**Illana Gozes**, *Tel Aviv University & Adams Super Center for Brain Studies* –  
Representing brain research conducted in Tel Aviv University

### **Session 1: Emotion Generation: Starting Point**

Chair: **Matti Mintz**, *Tel Aviv University, Israel*

10:00-11:00 **Keynote I: Lisa F. Barrett**, *Northeastern University, USA*

The Brain Basis of Emotion: From "Where" to "How"

11:00-11:30 **Simone G. Shamay-Tsoory**, *University of Haifa, Israel*

The Neurobiology of Social Comparison Based Emotions

11:30-12:00 **Gaurav Suri**, *Stanford University, USA*

Predicting Affective Choice

12:00-12:30 **Hillel Aviezer**, *Hebrew University of Jerusalem, Israel*

Beyond Pleasure and Pain: on the Inherent Ambiguity of Highly Intense Facial  
Expressions

12:30-13:20 **Lunch Break** (see map below for cafeteria locations on campus)

13:20-13:40 **Mindfulness Meditation Exercises** - **Philippe R. Goldin**, *Stanford University, USA*

### **Poster Flash Presentations: Cruising in the Fast Lane 1**

Chair: **Yoram Yovell**, *University of Haifa, Israel*

13:40-13:50 **Neomi Singer**, *Tel Aviv University & Tel Aviv Sourasky Medical Center, Israel*

What Can We Learn about the Emotional Brain Using Music?

13:50-14:00 **Barbara Basile**, *Santa Lucia Foundation, Italy*

Effect of Parasympathetic Stimulation on Brain Activity during Emotional  
Processing

14:00-14:10 **Dvorah Marciano-Romm**, *Hebrew University of Jerusalem, Israel*

Is it Regret I see in Your Brain? Looking for the Electrophysiological Correlates of Regret

14:10-14:20 **Haakon Engen**, *Max Planck Institute, Germany*  
Temporal Neurodynamics of Extended Emotion Regulation Reveals Distinct Signatures for the Implementation and Maintenance of Cognitive Reappraisal

14:20-14:30 **Gadi Gilam**, *Tel Aviv University & Tel Aviv Sourasky Medical Center, Israel*  
Regulation Benefits: an fMRI study of Anger Induced during Repeated Interactive Ultimatum Bargaining

**Session 2: Emotion Regulation: A Conceptual Road Map**

Chair: **Gal Richter-Levin**, *University of Haifa, Israel*

14:30-15:30 Keynote II: James J. Gross, *Stanford University, USA*  
Emotion Regulation: Conceptual and Empirical Foundations

15:30-16:00 **Coffee Break**

16:00-16:30 **Maya Tamir**, *Hebrew University of Jerusalem, Israel*  
Starting at the Beginning: Motives in Emotion Regulation

16:30-17:00 **Moshe Bar**, *Bar-Ilan University, Israel*  
A Cognitive Neuroscience Hypothesis of Mood

17:00-17:30 **Gal Sheppes**, *Tel Aviv University, Israel*  
Emotion Regulation Choice

17:30-18:00 **Itzhak Fried**, *Tel Aviv University and Tel Aviv Sourasky Medical Center, Israel; and University of California, USA*  
Single Neuron Studies of Emotion Generation and Regulation in Humans

18:00-18:30 **Talma Hendler**, *Tel Aviv University & Tel Aviv Sourasky Medical Center, Israel*  
Ecological Investigation of Emotional Regulation using Neural-Network Approach

**Day 2 – Wednesday, 20<sup>th</sup> of March, 2013 Fastlicht Auditorium, Mexico Building**

09:00-09:30 Registration & Coffee

**Session 3: Sensory-Somatic Regulation: Driving From Brain to Self and Back**

Chair: *Irit Shapira-Lichter, Tel Aviv Sourasky Medical Center, Israel*

09:30-10:30 Keynote III: Tor D. Wager, University of Colorado at Boulder, USA

Towards a Neuroscience of Human Emotion

10:30-11:00 *Hadas Okon-Singer, University of Haifa, Israel*

Cognitive Modulation of Emotional Reactions

11:30-12:00 *Gal Raz, Tel Aviv University & Tel Aviv Sourasky Medical Center, Israel*

(E)-Motion Pictures of the Brain: Network Dynamics during the Viewing of Emotional Films

12:00-12:30 *Gilad Hirschberger, Interdisciplinary Center Herzliya, Israel*

Psychophysiological, Behavioral, and Experiential Effects of Emotion Regulation during Relationship Conflict Interactions

12:30-13:00 Lunch Break (see map below for cafeteria locations on campus)

13:00-14:00 **Poster Session I** @ Mexico Building Reception Hall (see poster line-up below)

**Poster Flash Presentations: Cruising in the Fast Lane 2**

Chair: *Dafna Ben Bashat, Tel Aviv University & Tel Aviv Sourasky Medical Center, Israel*

14:00-14:10 *Hagar Goldberg, Weizmann Institute of Science, Israel*

The Emotion-Action Link: Naturalistic Emotional Stimuli Preferentially Activate the Human Dorsal Visual Stream

14:10-14:20 *Noga Cohen, Ben-Gurion University of the Negev, Israel*

Automatic Emotion Regulation: A Role for Executive Control

14:20-14:30 *Malak Abu Shakra, McGill University, Canada*

The Emotional Response to Alcohol and Stress as an Index of Distinct Risk Profiles among Distinct Typologies for Alcoholism Vulnerability – an fMRI Study

14:30-14:40 *Liron Morgenstern, Bar-Ilan University, Israel*

The role of gender in social anxiety- a MEG study

14:40-14:50 *Hedy Kober, Yale University, USA*

Mindful-Acceptance Modulates Negative Emotion and Physical Pain

**Session 4: Social Regulation: People Crossing**

Chair: *Ran Hassin, Hebrew University of Jerusalem, Israel*

14:50-15:50 Keynote IV: *Kevin Ochsner, Columbia University, USA*

T.B.A

15:50-16:10 **Coffee Break**

16:10-16:40 *Eran Halperin, Interdisciplinary Center Herzliya, Israel*

Emotion Regulation and Conflict Resolution: Using Reappraisal to Promote Peace

16:40-17:10 *Nira Liberman, Tel Aviv University, Israel*

How Psychological Distance Affects Self-Control: A Construal Level Theory Perspective

17:10-17:40 *Tal Eyal, Ben-Gurion University of the Negev, Israel*

The Relation between Emotions and Psychological Distance

17:40-18:10 *Mario Mikulincer, Interdisciplinary Center Herzliya, Israel*

T.B.A

**19:30 Open event at the Pasáž Bar,  
94 Allenbi St., Tel Aviv**





**Day 3 – Thursday, 21<sup>st</sup> of March, 2013 *Fastlicht Auditorium, Mexico Building***

09:00-09:30 Registration & Coffee

**Session 5: The Role of Culture in Emotion: Interdisciplinary Conversation**

Chair: *Gadi Gilam, Tel Aviv University & Tel Aviv Sourasky Medical Center, Israel*

09:30-10:30 Keynote V: Joan Y. Chiao, Northwestern University, USA

Cultural Neuroscience of Emotion

10:30-11:15 *Eva Jablonka, Tel Aviv University, Israel*

The Evolution of Language and the Regulation of Emotions

11:15-12:15 **Conversation**

Moderator: *Niza Yanay, Ben-Gurion University of the Negev, Israel*

*Participants: Lisa F. Barrett, Joan Y. Chiao, Eva Jablonka and the audience*

12:15-12:45 Lunch Break (see map below for cafeteria locations on campus)

12:45-13:45 **Poster Session 2 @ Mexico Building Reception Hall** (see poster line-up below)

**Session 6: Dysregulation: Avoiding Dead Ends**

Chair: *Eva Gilboa-Schechtman, Bar-Ilan University, Israel*

13:45-14:45 Keynote VI: Philippe R. Goldin, Stanford University, USA

Training Emotion Regulation in the Socially Anxious Mind

14:45-15:15 *Rony Paz, Weizmann Institute of Science, Israel*

The Fate of Aversive Emotional Memories

15:15-15:45 *Yair Bar-Haim, Tel Aviv University, Israel*

Emotion Regulation and Plasticity in Attention

15:45-16:05 Coffee Break

16:10-16:40 *Dominique Lamy, Tel Aviv University, Israel*

Emotional Context Influences Access of Visual Stimuli to Anxious Individuals' Awareness

16:40-17:10 *Ruth Feldman, Bar-Ilan University, Israel*

Bio-Behavioral Synchrony, Oxytocin, and Disorders of Affect

17:10-18:00 **Closing Remarks: Long-distance Walks in Emotional Landscapes**

Moderators: *James J. Gross, Lisa F. Barrett and Talma Hendler*

*Participants: All keynotes and audience*

\* Oral Presentation at the Poster Flash Presentations: Cruising in the Fast Lane (in Day 1 and 2)

**Poster Session 1 - Day 2, Wednesday, 20th of March, 2013, 13:00-14:00**

1. Emotional Perception and Social Competencies in Schizophrenic Patients – Ferreira, E.<sup>1</sup>; Almeida, A.<sup>1</sup>; Chong, Y.<sup>1</sup>; Perea, M.<sup>2</sup>; Parada, M.<sup>1</sup>; Garcia, R.<sup>2</sup>; 1-Instituto Superior da Maia; 2-Universidad de Salamanca.
2. From Mind to Matter: Neural Correlates of Abstract and Concrete Mindsets – Gilead, M.<sup>1</sup>; Liberman, N.<sup>1</sup>; Maril, N.<sup>2</sup>; 1-Tel Aviv University; 2-Hebrew University of Jerusalem.
3. Temperature, Construal Level and Interpersonal Warmth – Ram, H.<sup>1</sup>; Liberman, N.<sup>1</sup>; 1-Tel Aviv University.
4. Mistaking Acceptance for Mere Politeness: Depression and the Detection of Duchenne Smiles – Gadassi, R.<sup>1</sup>; Mor, N.<sup>2</sup>; 1-Bar-Ilan University; 2-Hebrew University of Jerusalem.
5. \*Effect of Parasympathetic Stimulation on Brain Activity during Emotional Processing – Basile, B.<sup>1</sup>; Bassi, A.<sup>1</sup>; Calcagnini, G.<sup>2</sup>; Caltagirone, C.<sup>1,3</sup>; Bozzali, M.<sup>1</sup>; 1-Santa Lucia Foundation; 2-Italian Institute of Health; 3-University of Rome.
6. Resilience Factors as Possible Mediators of Emotional Face Recognition – Tanzer, M.<sup>1</sup>; Golan, S.<sup>1</sup>; Avidan, G.<sup>1</sup>; 1-Ben-Gurion University of the Negev.
7. Social-Emotional Context Influences Awareness of Emotional Facial Expressions – Sklar, A.Y.<sup>1</sup>; Hassin, R.<sup>1</sup>; 1-Hebrew University of Jerusalem.
8. \*What Can We Learn about the Emotional Brain Using Music and What Can We Learn about Music by Examining the Emotional Brain – Singer, N.<sup>1,2</sup>; Jacobi, N.<sup>3</sup>; Soreq, E.<sup>1,2</sup>; Raz, G.<sup>1,2</sup>; Abecassis, D.<sup>2</sup>; Pasternak, E.<sup>2</sup>; Granot, R.<sup>3</sup>; Hendler, T.<sup>1,2</sup>; 1-Tel Aviv University; 2-Functional Brain Center at Tel Aviv Sourasky Medical Center; 3-Hebrew University of Jerusalem.
9. \*Temporal Neurodynamics of Extended Emotion Regulation Reveals Distinct Signatures for the Implementation and Maintenance of Cognitive Reappraisal – Engen, H.<sup>1</sup>; Smallwood, J.<sup>1</sup>; Endestad, T.<sup>2</sup>; 1-Max Planck Institute for Human Cognitive and Brain Sciences; 2-University of Oslo.
10. Listen to your Heart, Listen to Yourself: Effects of Exposure to Interoceptive Signals during the Ultimatum Game – Azevedo, R.T.<sup>1,2</sup>; Lenggenhager, B.<sup>2,3</sup>; Mancini, A.<sup>1,4</sup>; Aglioti, S.M.<sup>1,2</sup>; 1-University of Rome "La Sapienza"; 2-Santa Lucia Foundation; 3-University of Bern; 4-Centre National de la Recherche Scientifique.
11. \*Regulation Benefits: an fMRI study of Anger Induced during Repeated Interactive Ultimatum Bargaining – Gilam, G.<sup>1,2</sup>; Lin, T.<sup>1,2</sup>; Raz, G.<sup>1,2</sup>; Sela-Sheffy, R.<sup>1</sup>; Ariely, D.<sup>3</sup>; Hendler, T.<sup>1,2</sup>; 1-Tel Aviv University; 1-Tel Aviv University; 2-Functional Brain Center at Tel Aviv Sourasky Medical Center; 3-Duke University.
12. How Anger Impacts Vascular Health: A Question of Emotion Regulation? – Roebbig, J.<sup>1</sup>; Okon-Singer, H.<sup>1,3</sup>; Stemmler, G.<sup>2</sup>; Kanske, P.<sup>1</sup>; Ihme, K.A.<sup>1</sup>; Hanel, P.<sup>1</sup>; Villringer, A.<sup>1</sup>; 1-Max Planck Institute for Human Cognitive and Brain Sciences; 2-Philipps-University Marburg; 3-University of Haifa.



13. Intelligent Emotion Regulation – **Kobylnska, D.**<sup>1</sup>; Smieja, M.<sup>2</sup>; 1-University of Warsaw; 2-Jagiellonian University;
14. Brooding Concerning Negative Experiences: The Role of Self-Distanced Perspective – **Davidovitch, S.**<sup>1</sup>; Mor, N.<sup>1</sup>; Yovel, I.<sup>1</sup>; 1-Hebrew University of Jerusalem.
15. Interpersonal Instrumental Emotion Regulation – **Netzer, L.**<sup>1</sup>; Tamir, M.<sup>1</sup>; 1-Hebrew University of Jerusalem.
16. Affirmation of Groups' Agency Regulates Antisocial and Promotes Prosocial Tendencies: The Israeli-Palestinian Case – **SimanTov-Nachlieli, I.**<sup>1</sup>; Shnabel, N.<sup>1</sup>; 1-Tel Aviv University.
17. Acceptance as a Meta-Emotion Construct: Implications for Effective Emotion Regulation – **Kivity, Y.**<sup>1</sup>; Huppert, J.D.<sup>1</sup>; Tamir, M.<sup>1</sup>; 1-Hebrew University of Jerusalem.
18. \*Is it Regret I See in Your Brain? Looking for the Electrophysiological Correlates of Regret - **Marciano-Romm, D.**<sup>1</sup>; Deouell, L.Y.<sup>1</sup>; Bentin, S.<sup>1</sup>; 1-Hebrew University of Jerusalem.
19. Choice in Emotion Regulation Strategies – **Bigman, Y.**<sup>1</sup>; Sheppes, G.<sup>2</sup>; Tamir, M.<sup>1</sup>; 1-Hebrew University of Jerusalem; 2-Tel Aviv University.
20. When Negativity Adheres: Deciphering the Memory of Aversive Context and Associated False Memory - **Vaisvaser, S.**<sup>1,2</sup>; elrich N.<sup>1,2</sup>; Lin, T.<sup>1,2</sup>; Raz, G.<sup>1,2</sup>; Admon, R.<sup>3</sup>; Bar-Haim, Y.<sup>1</sup>; Fruchter, R.<sup>4</sup>; Shapira-Lichter, I.<sup>2</sup>; Tarash, R.<sup>1</sup>; Hendler, T.<sup>1,2</sup>; 1-Tel Aviv University; 1-Tel Aviv University; 2-Functional Brain Center at Tel Aviv Sourasky Medical Center; 3-Harvard Medical School; 4-Israel Defense Forces.
21. Brain Substrates of Recovery from Social Influence – **Edelson, M.G.**<sup>1</sup>; Dudai, Y.<sup>1</sup>; Dolan, R.J.<sup>2</sup>; Sharot, T.<sup>2</sup>; 1-Weizmann Institute of Science; 2-University College London.
22. Working Memory Updating of Emotional Content in Social Anxiety Disorder – **Segal, A.**<sup>1</sup>; Kessler, Y.<sup>1</sup>; Anholt, G.E.<sup>1</sup>; Ben-Gurion University of the Negev.
23. Age-Related Advantages in Releasing Irrelevant Emotional Information from Working Memory – **Trapp, S.**<sup>1</sup>; Belkner, S.<sup>2</sup>; Okon-Singer, H.<sup>3</sup>; Lepsien, J.<sup>1</sup>; Schroeter, M.L.<sup>1</sup>; 1-Max Planck Institute for Human Cognitive and Brain Sciences; 2-University of Konstanz; 3-University of Haifa.
24. Inhibition of the Amygdala Fear Response by the Cerebellar Output – **Magal, A.**<sup>1</sup>; Mintz, M.<sup>1</sup>; 1-Tel Aviv University.
25. Hippocampal Theta Rhythm Paints the Space with Emotional Valence – **Wasserman, E.**<sup>1</sup>; Pelc, T.<sup>1</sup>; Mintz, M.<sup>1</sup>; 1-Tel Aviv University.

### **Poster Session 2 - Day 3, Thursday, 21st of March, 2013, 12:45-13:45**

1. Exploring the Path to Empathy: The Development of Empathy among Infants Aged 3-9 Months – **Basford, Y.**<sup>1</sup>; Roth-Hanania, R.<sup>1</sup>; 1-Tel Aviv-Yaffo Academic College.
2. The Dopamine D4 Receptor Gene Shows a Gender Sensitive Association with Cognitive Empathy: Evidence from Two Independent Samples – **Uzefovsky, F.**; Shalev, I.; Israel, S.; Edelman, S.; Raz, Y.; Perach-Bloom, N.; Mankuta, D.; Shamay-Tsoory, S.G.; Knafo, A.; Ebstein R.P.

3. Modeling the Construct of Empathy: Does Cognition Generation or Emotion Generation Serve as the Portal to Empathy? – **Israelashvili, J.**<sup>1</sup>; 1-Tel Aviv University.
4. The Role of the Ventromedial Prefrontal Cortex in First and Second Order Embarrassment – **Adler, N.**<sup>1</sup>; Aharon-Peretz, J.<sup>1</sup>; Shamay-Tsoory, S.G.<sup>1</sup>; 1-University of Haifa.
5. \*The Emotional Response to Alcohol and Stress As an Index of Distinct Risk Profiles Among Distinct Typologies For Alcoholism Vulnerability: an fMRI Study – **Abu Shakra, M.**<sup>1</sup>; Dagher, A.<sup>2</sup>; Pruessner, J.<sup>1</sup>; Leyton, M.<sup>1</sup>; Pihl, R.O.<sup>1</sup>; 1-McGill University; 2-Montreal Neurology Institute and Hospital.
6. \*The Role of Gender in Social Anxiety: a MEG Study – **Morgenstern, L.**<sup>1</sup>; Schechtman, E.G.<sup>1</sup>; Goldstein, A.<sup>1</sup>; 1-Bar-Ilan University.
7. Shame but not Negativity Differentiates Responses to Social Rejection and Other Negative Scenes among High and Low Socially Anxious Individuals – **Kivity, Y.**<sup>1</sup>; Huppert, J.D.<sup>1</sup>; 1-Hebrew University of Jerusalem.
8. Regulation of Social Rejection and Other Negative Emotional Content in Social Anxiety: A Controlled Event Related Potential Study – **Kivity, Y.**<sup>1</sup>; Wiskop, N.<sup>1</sup>; Huppert, J.D.<sup>1</sup>; 1-Hebrew University of Jerusalem.
9. 'Like Mother Like Child'? Emotional Reactivity and Reappraisal in Mothers of Anxious Children – **Carthy, T.**<sup>1</sup>; Wald, N.<sup>2,3</sup>; Tadmor-Zisman, Y.<sup>3</sup>; Farbshtein, I.<sup>2</sup>; Apter, A.<sup>4,5</sup>; 1-Interdisciplinary Center Herzliya; 2-Ziv Medical Center; 3-Bar-Ilan University; 4-Schneider Children's Medical Center; 5-Tel Aviv University.
10. A machine learning approach to characterizing human brain networks that are involved in response to stress – **Maron-Katz, A.**<sup>1,2</sup>; Amar, D.<sup>1</sup>; Vaisvaser, S.<sup>1,2</sup>; Hendler, T.<sup>1</sup>; Shamir, R.<sup>1,2</sup>; 1-Tel Aviv University; 2-Functional Brain Center at Tel Aviv Sourasky Medical Center.
11. Typifying Emotional Reappraisal by Network Graph Causal Organization – **Jacob, Y.**<sup>1,2</sup>; Raz, G.<sup>1,2</sup>; Madi, A.<sup>1</sup>; Gilam, G.<sup>1,2</sup>; Lin, T.<sup>1,2</sup>; Ben-Jacob, E.<sup>1</sup>; Hendler, T.<sup>1,2</sup>; 1-Tel Aviv University; 2-Functional Brain Center at Tel Aviv Sourasky Medical Center.
12. The Construct of Emotion Recognition: a Cross-Sectional Study – **Feingold, D.**<sup>1</sup>; Ohayon, I.H.<sup>1</sup>; Kravetz, S.<sup>1</sup>; 1-Bar-Ilan University.
13. Neurobehavioral Characterization of Motivation and its Regulation – **Gonen, T.**<sup>1,2</sup>; Eldar, E.<sup>2</sup>; Hendler, T.<sup>1,2</sup>; 1-Tel Aviv University; ; 2-Functional Brain Center at Tel Aviv Sourasky Medical Center; 3-Princeton University.
14. \*The Emotion-Action Link: Naturalistic Emotional Stimuli Preferentially Activate the Human Dorsal Visual Stream – **Goldberg, H.**<sup>1</sup>; Preminger, S.<sup>2</sup>; Malach, R.<sup>1</sup>; 1-Weizmann Institute of Science; 2-Interdisciplinary Center Herzliya.
15. \*Mindful-Acceptance Modulates Negative Emotion and Physical Pain – **Kober, H.**<sup>1</sup>; Buhle, J.<sup>2</sup>; Mende-Siedlecki, p.<sup>3</sup>; Weber, J.<sup>2</sup>; Hughes, B.<sup>4</sup>; Ochsner, K.<sup>2</sup>; Wager, T.D.<sup>5</sup>; 1-Yale University; 2-Columbia University; 3-Princeton University; 4-Stanford University; 5-University of Colorado.
16. Emotion Regulation Training for Subclinical Worriers – **Moyal, N.**<sup>1</sup>; Cohen, N.<sup>1</sup>; Henik, A.<sup>1</sup>; Anholt, G.E.<sup>1</sup>; 1-Ben-Gurion University.

17. An Individual-Item Analysis of the Emotional Stroop Effect: Evidence for Within Block Habituation – **Mama, Y.**<sup>1</sup>; Ben-Haim, M.S.<sup>2</sup>; 1-Ariel University Center; 2-Tel Aviv University.
18. Sustained Effects of Emotion In and Out of the Laboratory: The Role of Desensitization – **Ben-Haim, M.S.**<sup>1</sup>; Moyal, R.<sup>1</sup>; Mama, Y.<sup>2</sup>; 1- Tel Aviv University; 2- Ariel University Center.
19. Stop Feeling: Inhibition of Emotional Interference Following Stop-Signal Trials – **Kalanthroff, E.**<sup>1</sup>; Cohen, N.<sup>1</sup>; Henik, A.<sup>1</sup>; 1-Ben-Gurion University.
20. Repeated Checking Primes Inhibition in Healthy Participants – **Linkovski, O.**<sup>1</sup>; Kalanthroff, E.<sup>1</sup>; Anholt, G.E.<sup>1</sup>; Henik, A.<sup>1</sup>; 1-Ben-Gurion University.
21. Methylphenidate Remediate Error-Predicting Activation of the Default Mode Brain Regions in Cocaine Addicted Individuals – **Matuskey, D.**<sup>1</sup>; Luo, X.<sup>1,2</sup>; Zhang S.<sup>1</sup>; Morgan, P.T.<sup>1</sup>; Abdelghany, O.<sup>3</sup>; Mailson, R.T.<sup>1</sup>; Li, C.R.<sup>1</sup>; 1- Yale University; 2-Brown University, 3-Yale New Haven Hospital.
22. Reappraisal and the Ability to Inhibit Negative Information: The Moderating Effect of Brooding– **Daches, S.**<sup>1</sup>; Mor, N.<sup>1</sup>; 1-1-Hebrew University of Jerusalem.
23. \*Automatic Emotion Regulation: A Role for Executive Control – **Cohen, N.**<sup>1</sup>; Henik, A.<sup>1</sup>; 1-Ben-Gurion University.
24. The Links between Emotion and Executive Control: a Comparison between the Visual and the Tactile Modalities – **Fruchtman, T.**<sup>1</sup>; Salzer, Y.<sup>1</sup>; Cohen, N.<sup>1</sup>; Henik, A.<sup>1</sup>; 1-Ben-Gurion University.
25. When Stepping Outside the Self Is Not Enough: Observer Perspective Reduces the Experience of Basic but Not of Self-Conscious Emotions – **Katzir, M.**<sup>1</sup>; Eyal, T.<sup>1</sup>; 1-Ben-Gurion University.
26. Out of the Frying Pan into the Fire: Emotional Reactivity to Social Proximity in Borderline and Avoidant Personality Disorders in Daily Life – **Gadassi, R.**<sup>1</sup>; Snir, A.<sup>1</sup>; Berenson R.K.<sup>2</sup>; Downey, G.<sup>3</sup>; Rafaeli, E.<sup>1,3</sup>; 1-Bar-Ilan University; 2-Gettysburg College; 3- Columbia University.
27. Feeling Out of Context: Individuals with High PTSD Symptoms Show Less Flexibility in Emotion Regulation Choice - Segev, R.<sup>1</sup>; Sheppes, G.<sup>2</sup>; Paradis, A.<sup>3</sup>; Richter-Levin, G.<sup>3</sup>; **Levy-Gigi, E.**<sup>3</sup>; 1-Tel Aviv-Yaffo Academic College; 2-Tel Aviv University; 3-University of Haifa.

## **Public Transport**

### Buses

The campus is served by numerous bus routes, listed below according to the two main bus companies:

Egged routes: 74, 86, 274, 270, 572, 604. [<http://www.egged.co.il/>]

Dan routes: 49, 45, 25, 7, 127, 24, 13, 6, 220, 189, 89 [<http://dan.co.il/>]

(Bus schedules and routes are subject to change. Please check with the bus companies for the latest information.)

### Trains

The University Railway Station is within walking distance from campus (on its southeast flank), or you can catch Dan routes 7, 45 and 127 to the station.

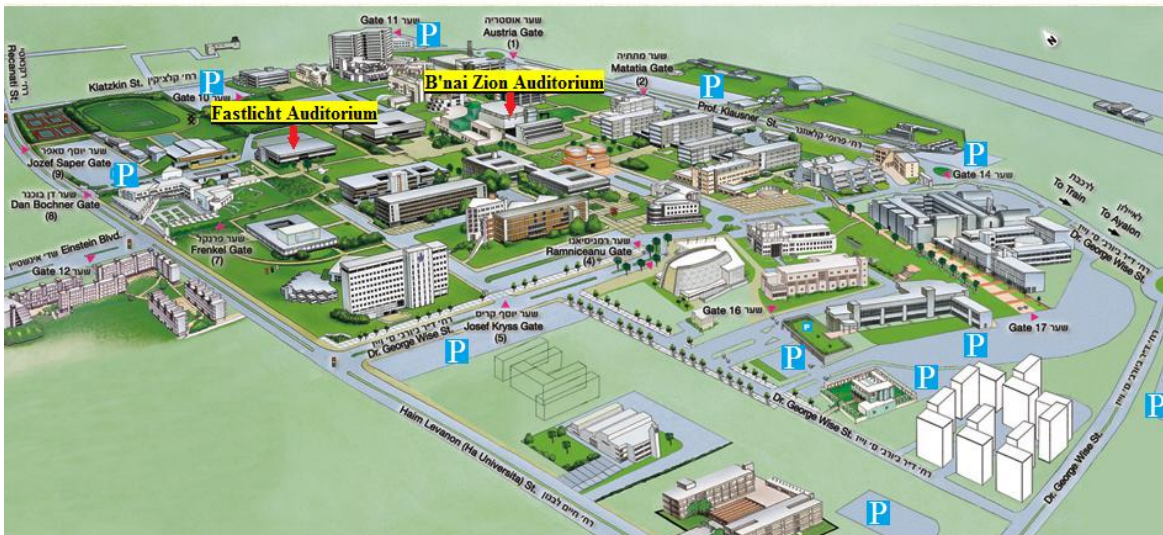
A detailed train schedule is available at <http://www.rail.co.il/EN/>

## **Parking**

Parking inside the TAU campus is permitted only for teaching and administrative staff.

Students and visitors are encouraged to use one of the many parking lots adjacent to the campus, as can be seen on the Campus Map

### **Tel Aviv University Campus**



### **Tel Aviv Mini-Map**



### **Ramat Aviv Mini-Map**

